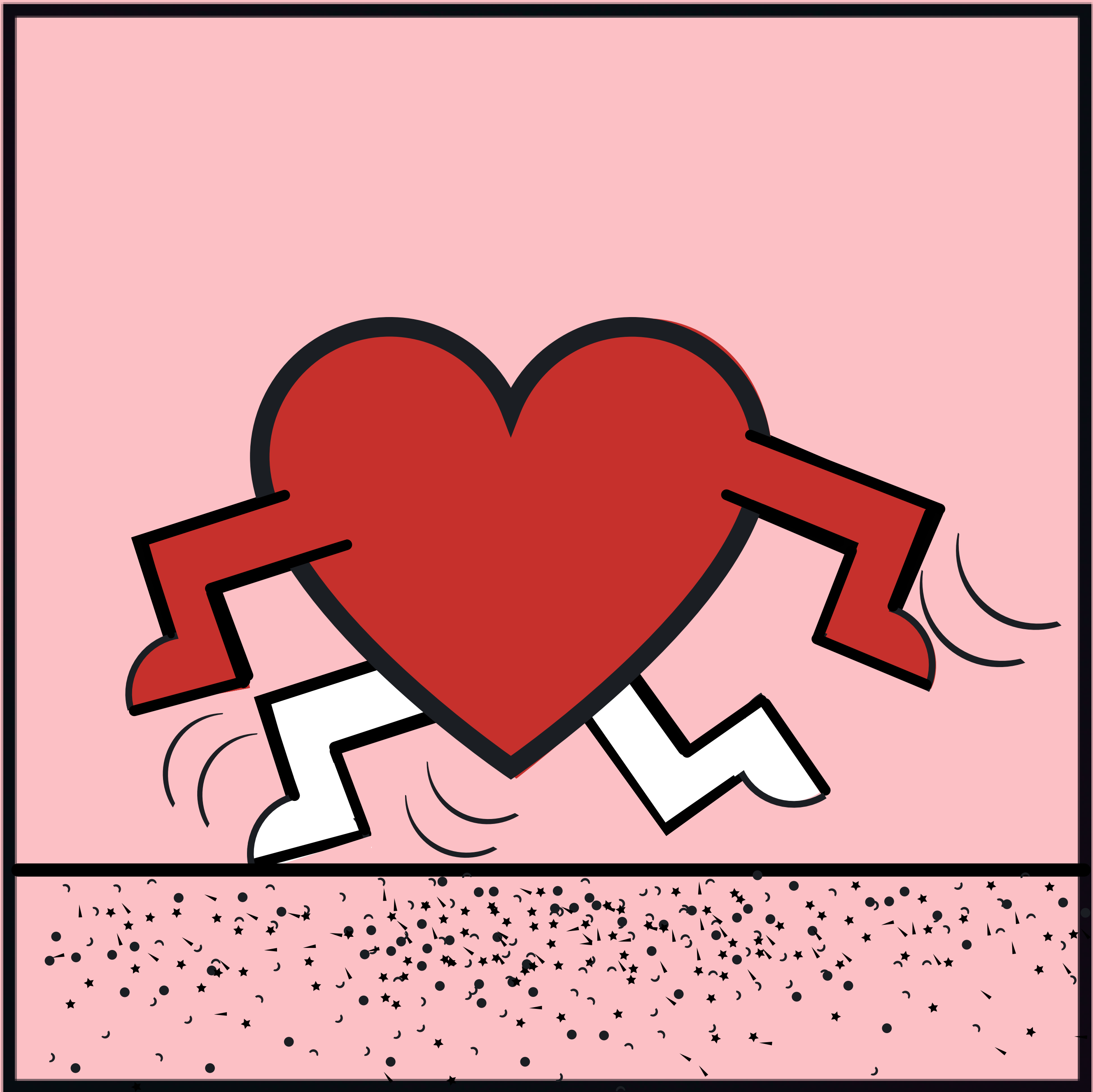


Keith Haring



Children's Activity

**FOR THOSE WHO LOVE ART &
CULTURE...LET'S CREATE PUBLIC
ART INSPIRED BY KEITH HARING'S
CHALK ART!**



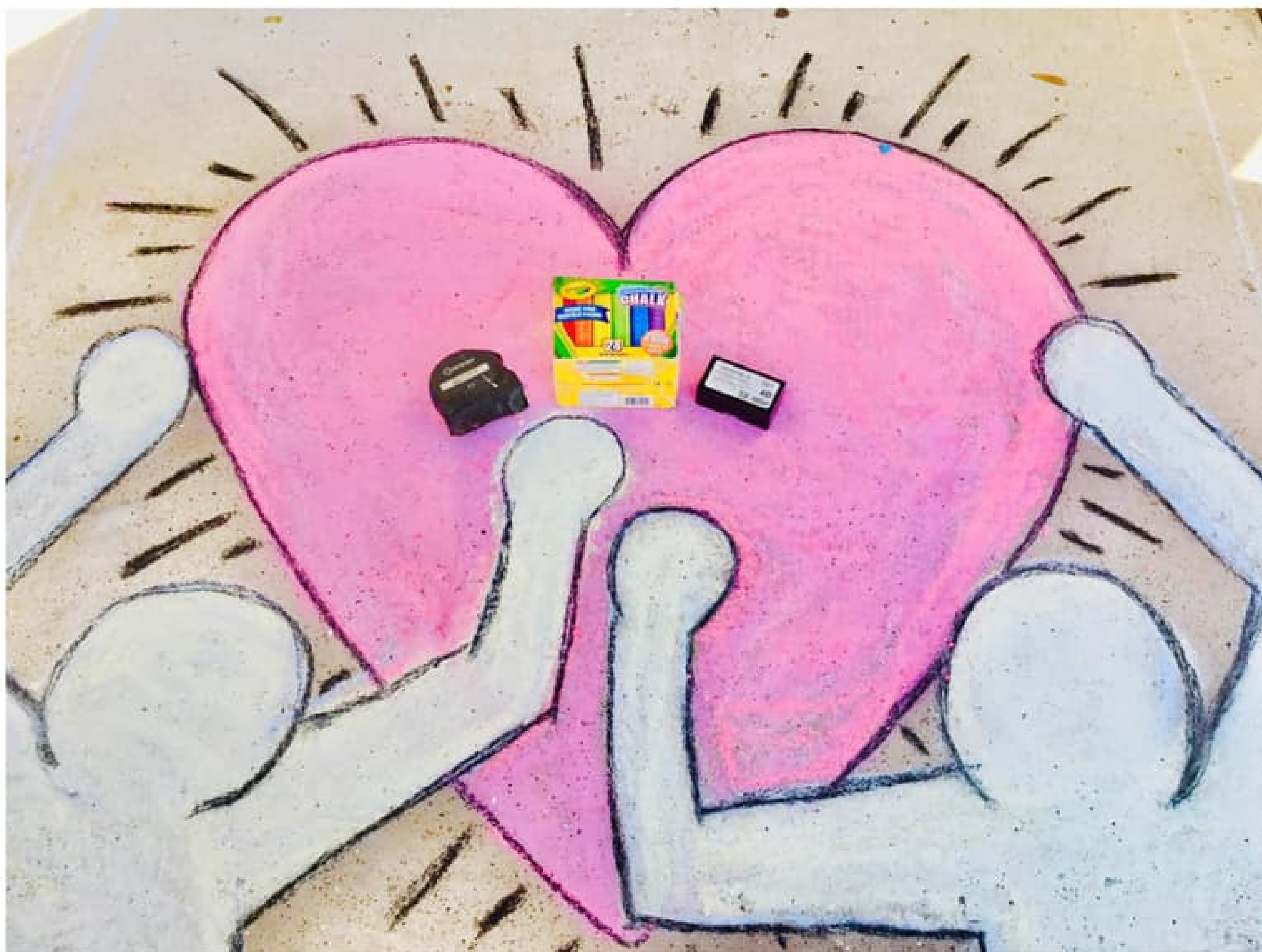
Keith Allen Haring was an American artist whose pop art and graffiti-like work grew out of the New York City street culture of the 1980s.



Haring first received public attention because of the graffiti art/public art he created in New York City subway stations using white chalk drawings.



**SUPPLIES NEEDED:
MEASURING TAPE
CHARCOAL
CHALK**



**STEP ONE:
GRAB YOUR
MEASURING TAPE &
CHALK. THEN
MEASURE & OUTLINE
A 5ft x 5ft SQUARE
AREA.**

**STEP TWO:
CHOOSE A RED OR
PINK PIECE OF
CHALK & DRAW A
HEART.**



**STEP THREE:
USING A WHITE PIECE
OF CHALK DRAW A
CIRCLE AT THE
BOTTOM LEFT HAND
CORNER OF THE
HEART.**



**STEP FOUR:
USING YOUR WHITE
PIECE CHALK DRAW
A TRAPEZOID RIGHT
UNDERNEATH THE
CIRCLE.**



**STEP FIVE:
DRAW A REVERSED
L NEAR THE
ORIGINAL CIRCLE
AND TRAPEZOID
AND LET IT ENTER
THE HEART
OUTLINE.**

**STEP SIX:
DRAW A CIRCLE AT
THE END OF THE
REVERSED L.**

**STEP SEVEN:
DRAW ANOTHER
REVERSED L
UNDER THE
ORIGINAL.**



**STEP EIGHT:
DRAW AN L ON THE
OPPOSITE SIDE OF
THE ORIGINAL LINE
ON THE OUTSIDE OF
THE HEART
OUTLINE.**



**STEP NINE:
DRAW A CIRCLE AT
THE END OF THE L.**



**STEP TEN:
DRAW AN L BELOW THE
ORIGINAL L TOWARD
THE CIRCLE.**

**REPEAT
STEPS FIVE - TEN ON
THE OPPOSITE SIDE OF
THE HEART.**



**STEP ELEVEN:
GRAB YOUR PINK OR RED CHALK TO FILL IN
YOUR HEART THEN BLEND WITH YOUR HAND.**



**STEP TWELVE:
GRAB YOUR WHITE CHALK TO FILL IN YOUR
FIGURES THEN BLEND WITH YOUR HAND.**



**STEP THIRTEEN:
GRAB YOUR CHARCOAL AND ADD AN OUTLINE
AROUND YOUR FIGURES AND HEART.**



**STEP FOURTEEN:
DRAW LONG AND SHORT LINES AROUND THE
HEART AND BETWEEN THE FIGURES.**



NOW YOU HAVE FINISHED YOUR KEITH HARING INSPIRED CHALK ART

